

Horsham

Centre Guide



L'ASTROLABIO

We are family

elac

study vacations

Contents

Horsham	3
Christ's Hospital School	4
Accommodation	5
Meals	6
Medical & Safety Information	7
What to bring	8
General Information	9
Useful Information/Contact	10-14

Accredited by the
 **BRITISH
COUNCIL**
for the teaching
of English in the UK



Horsham

Horsham is a pretty market town situated on the River Arun, on the fringe of beautiful countryside known as The Weald. It is 50km south west of London and 30 km north west of Brighton. Combining history, culture and nature, Horsham has medieval streets and Georgian buildings to explore, as well as independent shops and cafes to visit.

Some of what Horsham and the area have to offer:

- Direct train services to London and Brighton via Three Bridges
- Beautiful surrounding countryside
- Regular markets in the centre with fresh local produce
- Horsham Park with a Dragon maze and nature garden
- Nearby places of historic interest



Christ's Hospital School

Our course takes place at Christ's Hospital School, a beautiful red brick boarding school set in its own extensive grounds. The school has a magnificent dining hall, and a theatre replicating Shakespeare's Globe theatre in London.

Location

Christ's Hospital is a tiny village with its own railway station, just four kilometres away from Horsham.

Facilities

SPORTS

- Playing Field
- Tennis Courts
- Sports Hall
- Indoor Swimming Pool
- Two Full Size Astroturfs

EDUCATIONAL FACILITIES

- Spacious Classrooms with interactive whiteboards
- Drama Studio
- Assembly Hall

OTHER

- Large Dining Hall



Accommodation

Accommodation is in five houses located throughout the campus, with single, twin, triple and quad rooms and shared bathroom facilities. All have access to comfortable communal areas.

Each boarding house has its own design, but the facilities remain the same. Bed linen is changed weekly. Some rooms have disabled access. Bathroom facilities are shared.



School Map

CHRIST'S HOSPITAL
A SCHOOL LIKE NO OTHER

Access routes
and main car park
Public Roads
Principal venues

Theatre
Octagon
Dominions Theatre
Big School
Chapel
Quad
Court Room
Dining Hall
Hertford Centre
Main Gate

By Road (Free Parking)
Christ's Hospital is signposted from the Worthing Road out of Horsham and the A24 by-pass. For ALL events please park in the Main Visitors car park, accessed via the Main Gate. Drivers with disabled badges should go to the Security Office and will be directed to designated parking spaces.

Satnav
Main Gate: Lat 51.04733 Long -0.360961

By Rail
Christ's Hospital station is 20 minutes walk from the Theatre. The nearest mainline station is located at Horsham.

To the Station

Meals



Residential students

Meals are buffet style and comprise breakfast, lunch and an evening meal. There is a choice of food to cater for vegetarians, different allergies, religious diets, etc. For educational excursions, a packed lunch is provided.

Here is an example menu at Horsham:

	Day 1	Day 2	Day 3
Breakfast	Smoked bacon, meat free sausages, scrambled egg, baked beans, sauté mushrooms, hash browns	Pork sausage, meat free sausages, poached egg, baked beans, sauté mushrooms, potato waffle	Smoked bacon, meat free sausages, scrambled egg, baked beans, sauté mushrooms, hash browns
	Sliced meats, cheese, croissants	Sliced meats, cheese, pain au chocolate	Sliced meats, cheese, croissants
Selection of Cereals, Yoghurt Bar, Toast & Preserves, Whole & sliced fruits			
Lunch	Bread		
	Supreme of chicken	Chicken shawarma flat bread wrap with Turkish cucumber yogurt	Stir fry chicken noodles
	Asian pork special fried rice	Turkey escalope with emmental cheese and red onion chutney	Mediterranean lamb ragu
	Veggie patty with flat mushroom and swiss cheese	Halloumi and vegetable shawarma flat bread with Turkish cucumber yogurt	Stuffed vine leaves middle eastern style
	Herby potatoes, glazed carrots, creamed spinach	Rice, steamed broccoli & cauliflower, roasted peppers	Pasta, stir fried vegetables
Mixed fruit crumble with custard	Mixed fruit and seed flapjack	Sugar ring doughnuts	
Dinner	Bread		
	Plaice goujons with lemon tartare sauce	Chicken and tortellini carbonara	Southern spiced chicken
	Sausage roll with chip shop gravy	Belgian style beef with potato	Mac and cheese with smoked bacon
	Vegetarian Cornish pasty	Vegetable and lentil dhal with paneer cheese	Mac and cheese
	Herby potatoes, mushy peas, baked beans	Sugar snap peas, cherry tomatoes, sauté courgettes with herbs	Roasted cajun potatoes, corn on the cob, breaded mushrooms, sliced cheese, lettuce, tomato, BBQ sauce
	Chocolate Ice cream	Dressed jellies with summer fruits	Key lime dessert
Selection of salads and yogurt with toppings are available each day			

menu subject to change

Medical Care & Wellbeing



There is a Minor Injuries Unit at Hurst Road, Horsham, open Monday to Friday. Redhill Hospital has an A&E department as well as general wards.

There are local pharmacies nearby if students require medication. Students must hand all medication to their group leader or the Elac Welfare Officer who will then administer it when required.

A First Aid box is kept in the Elac office and basic kits are taken on all excursions.

Safety & Security



There is a security team on site at Christ's Hospital School 24/7 with CCTV monitoring of the main entrance and boarding house as well as some of the site. A security guard patrols around campus at night time..

Each boarding house has a unique pin code to gain entry but individual rooms cannot be locked. Students wanting to secure their things should bring a small padlock and chain as most of the rooms have a cupboard that can be locked in this way. At least one Group Leader will have a lockable bedroom, so students can give them their valuables to store.

Students must lock all windows on leaving their accommodation and follow security procedures explained on arrival.

When out and about, we will explain to students how they can keep themselves and their belongings safe.

What to bring



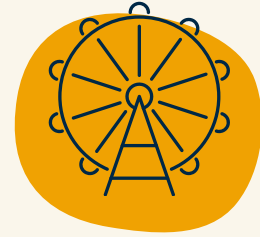
Documents

- **Passport** and copy of it
- Visa document and copy of it (if required)
- Insurance document (including GHIC card if from EU)
- A copy of any medication prescriptions or certificates
- UK currency



Clothing Essentials

- Casual clothing
- Trainers
- Sports clothes
- Swimwear
- Towel (for swimming)
- Costume for disco/talent show
- Bag for dirty laundry
- Towel



For Excursions

- Small backpack/handbag
- Comfortable clothes
- Shoes for walking
- Umbrella
- Waterproof jacket
- Sunglasses & sunscreen



Toiletries & Medicines

- Toiletries, eg shampoo, soap, toothpaste
- Medicines, eg asthma inhaler, contact lens solution
- Please **DON'T** bring "disposable" toilet wipes



Gadgets & Electronics

- Electronic devices (camera, mobile phone, ipad)
- Travel adaptor (UK 3 pin, 13A, 220V - 240V)
- Hair Dryer



Other required items

- Pencil case
- Pen & Pencil
- Notepad
- Water bottle
- Hand sanitizer
- Any props, costumes or items needed for the Cultural Exchange (Voyagers and Trailblazers)

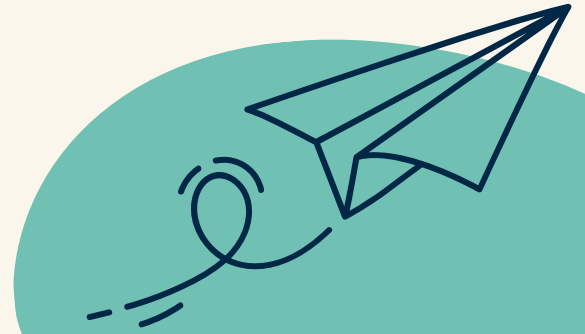
Please label all items, in case they get lost

General Information



Student ages

- Residential: 11 - 17 years
- Individuals: 14 - 17 years



Airport Arrivals

Groups and individuals will be met by an Elac representative at the airport.

Travel to the centre will be by private coach or taxi.

Approximate Transfer times: Gatwick (LGW) 30 minutes, Heathrow (LHR) 1 hour, Stansted (STN) 1.5 hours.

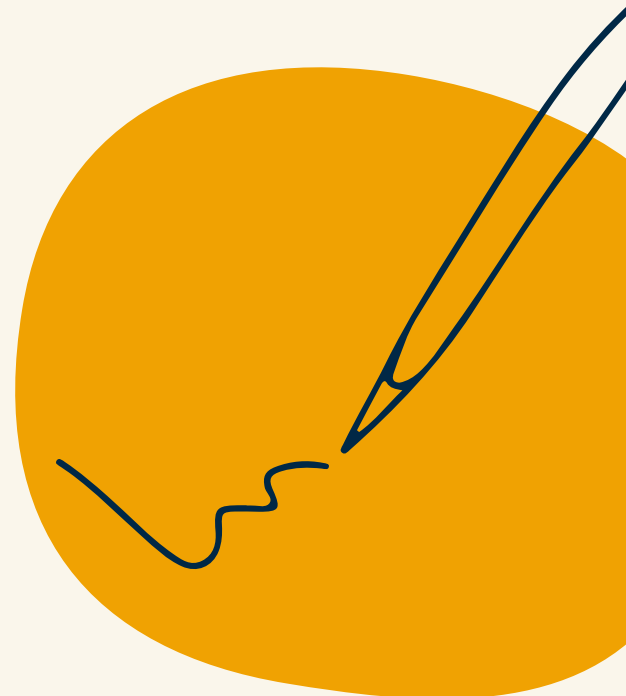
*Individuals who have booked a shared transfer, may have to wait at the airport for up to 2 hours before being taken to the centre.

Day #1 Welcome & Testing

On the first full day of the programme students will:

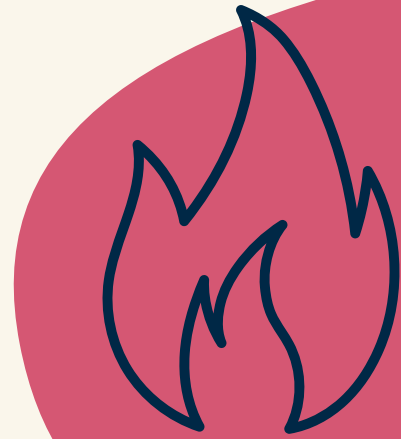
- have a welcome meeting with the Centre Manager,
- an orientation of the centre
- do an English language test (written and spoken)
- have a tour of the local town and some free time.

Students will receive an Elac lanyard with Emergency Contact Card



Fire Safety

- Fire safety procedures on first day
- Practice fire drill for students.
- Fire signage throughout building
- Group leaders explain safety procedures to students in their own language.



Mobile Phones

- All mobile phones must be put on silent and placed in the box provided at the front of the classroom at the start of every lesson.
- Mobile phones must not be used during activities unless required as part of the session.
- Staff may confiscate phones if rules are not followed.

Noise

- Students must keep noise to a minimum when returning to their accommodation
- Curfew is 10pm.



Damages & Replacements

- Fire alarm set off between 9.00 am and 5.30 pm: £75.00
- Fire alarm set off between 5.30 pm and 9.00 am: £100
- Replacing/refilling fire extinguishers: £100
- Replacement of lost fob/key: £100

The school imposes the above call-out charges for deliberate acts of misuse. Costs for other damages will be handled on a case-by-case basis.

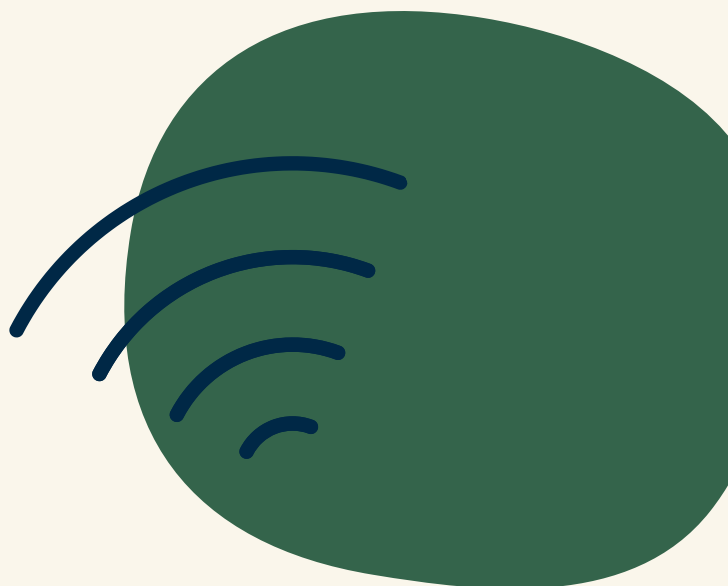


Smoking, Drugs, Alcohol & Vaping

- It is illegal to smoke in any indoor public places - this includes vaping.
- There is no smoking allowed on the campus.
- No alcohol or drugs are permitted in any of our junior vacation courses regardless of age.

Computer and WiFi Access

- Wifi available throughout the site
- Student access to computer room during activities.



Shop

Shop on-site that sells:

- Hot and cold drinks
- Chocolate
- Snacks
- Sweets
- Ice cream

As well as a range of other useful supplies.



Laundry, Cleaning & Bedding

- There is a laundry room in each house. Washers and dryer available at £2.50 each (students provide their own washing powder)
- Bedrooms and bathrooms are cleaned daily (not weekends)
- Bed linen is provided and is washed once a week

Bank & Post Office

- Selection of banks nearby (Horsham)
- Post Office in Horsham and Haywards Heath
- Alternatively, currency exchange can be done whilst on excursions.



Hospital & Medical Care

A&E Princess Royal Hospital, Haywards Heath, 01444 441881
Newtons Surgery, Haywards Heath, 01444 412280



Local Transport

- Direct trains to London (60 min) from Horsham
- Taxis can be organised through the Elac Management team.

Quiet/Multi Faith Room

- All students and Group Leaders can have access to a quiet room for religious observance.
- Please speak to the Elac management team for more information.



Places of Worship

- All Saints Church, Shepherds Way, Horsham, West Sussex
- St Gabriels Church, 19 East Street Billingsurst, West Sussex
- Mid Sussex Islamic Centre, 19 Wivelsfield Road, Haywards Heath, RH16 4EF

Useful information

Contact Numbers

- Elac Horsham Office: 07579831424
- Police, Fire, Ambulance: 999 (emergencies only)
- Police – non emergencies: 101
- Elac Head Office (Bath): +44 1225 443261

School Address

Elac Study Vacations, c/o Christ's Hospital School, Christ's Hospital Road, Horsham, RH13 OYP

If sending post, please ensure the letter/package is clearly labelled with the student's name and group.

Head Office

22 Milsom Street,
Bath
BA1 1DE, UK

If you have any queries about this course, please get in touch with our head office. Further information and photos can be found on our website (www.elac.co.uk). We hope you enjoy your course in Horsham.



L'Astrolabio srl

+39 02 72003311

Headquarters: via Boccaccio 14, Milan 20123 · Italy

elac.co.uk

+44 1225 443261

info@elac.co.uk

